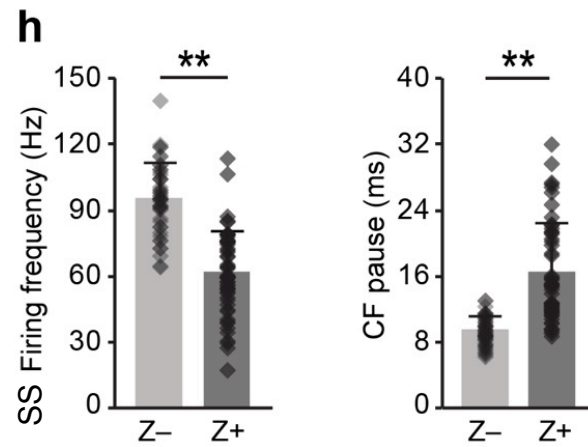
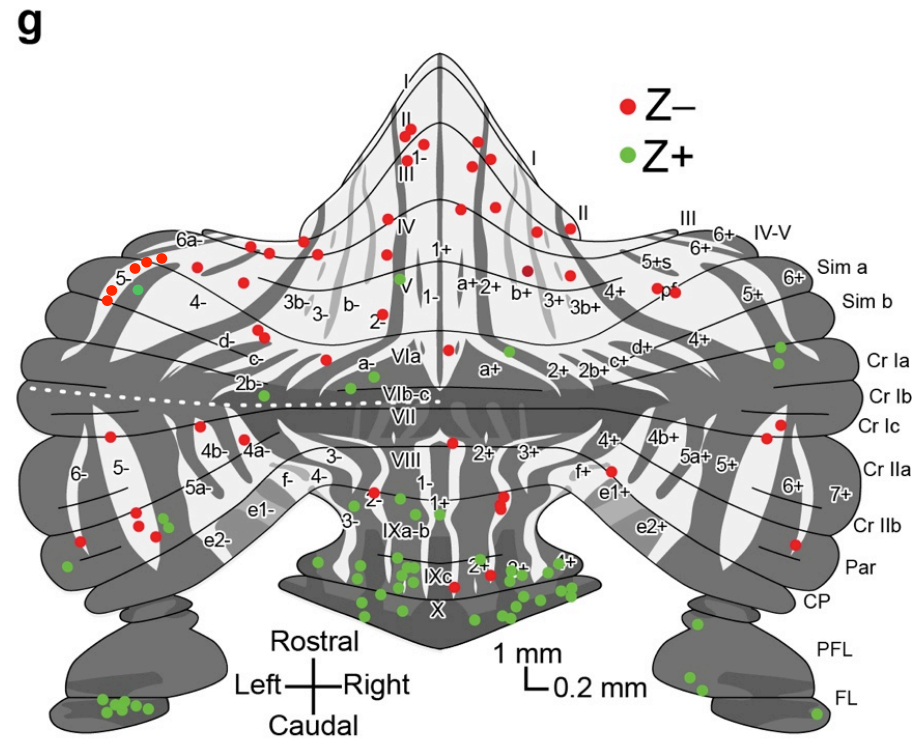
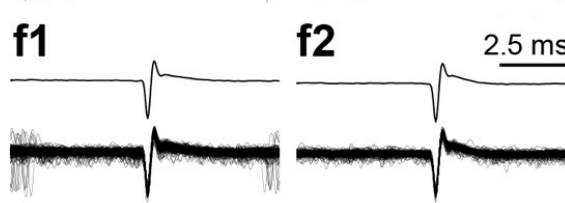
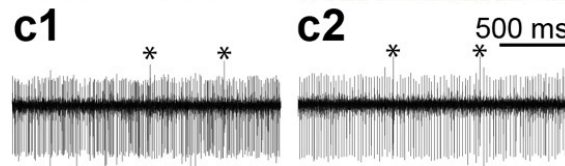
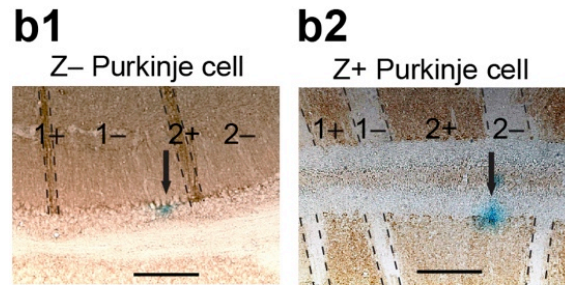
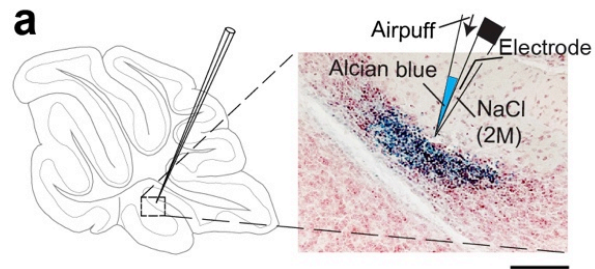
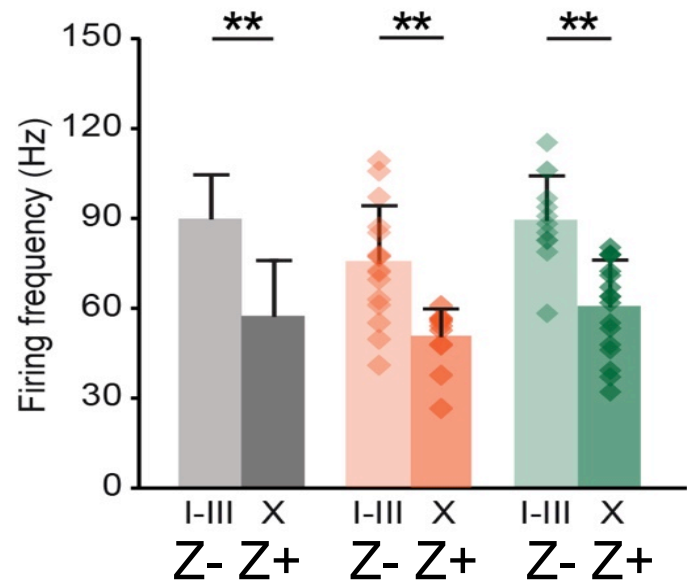
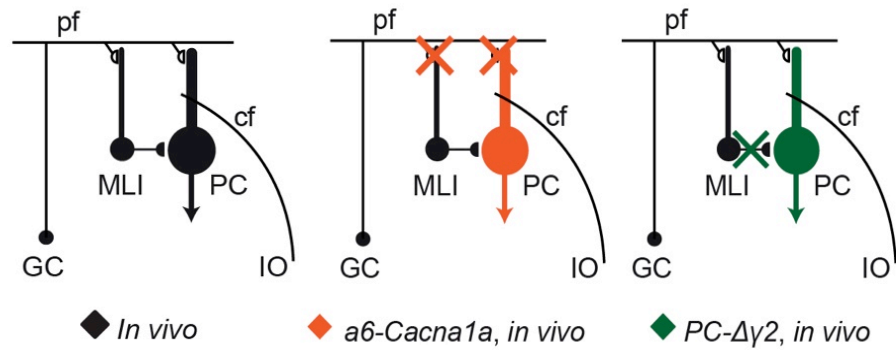
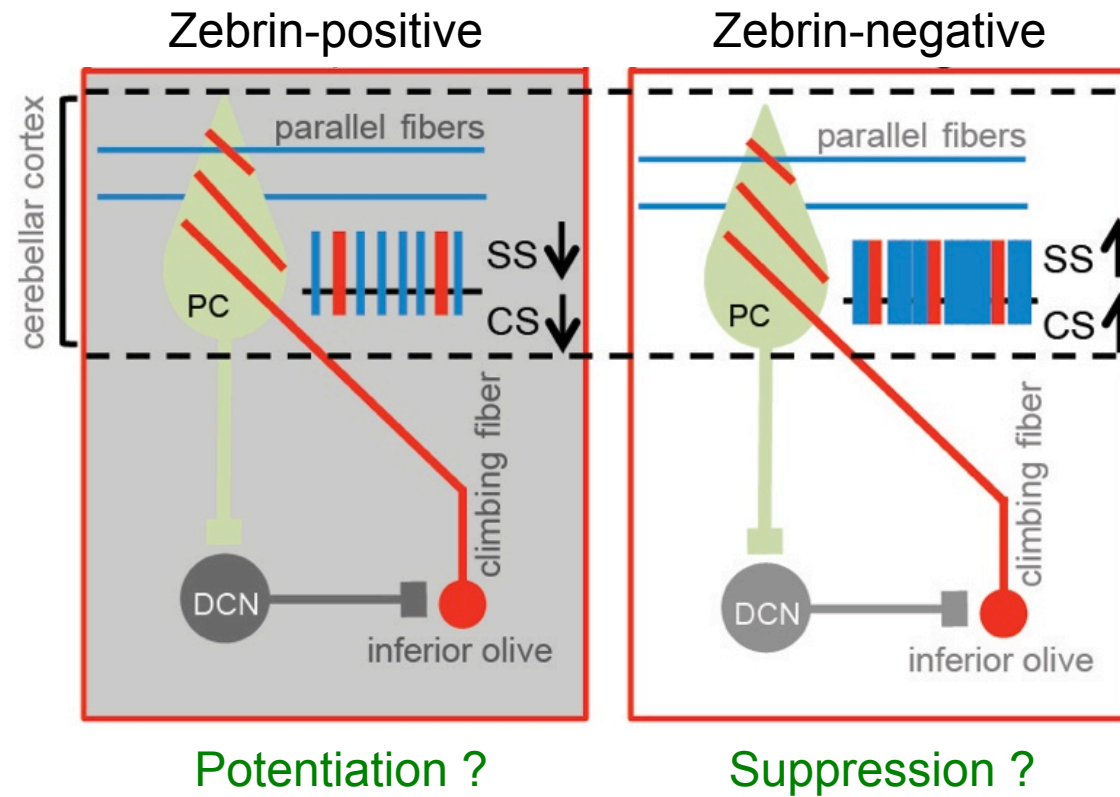


- **Differential encoding in olivocerebellar modules**
- **Learning in Zebrin-positive zones is dominated by increase in simple spike activity**
- **Learning in Zebrin-negative zones is dominated by decrease in simple spike activity**



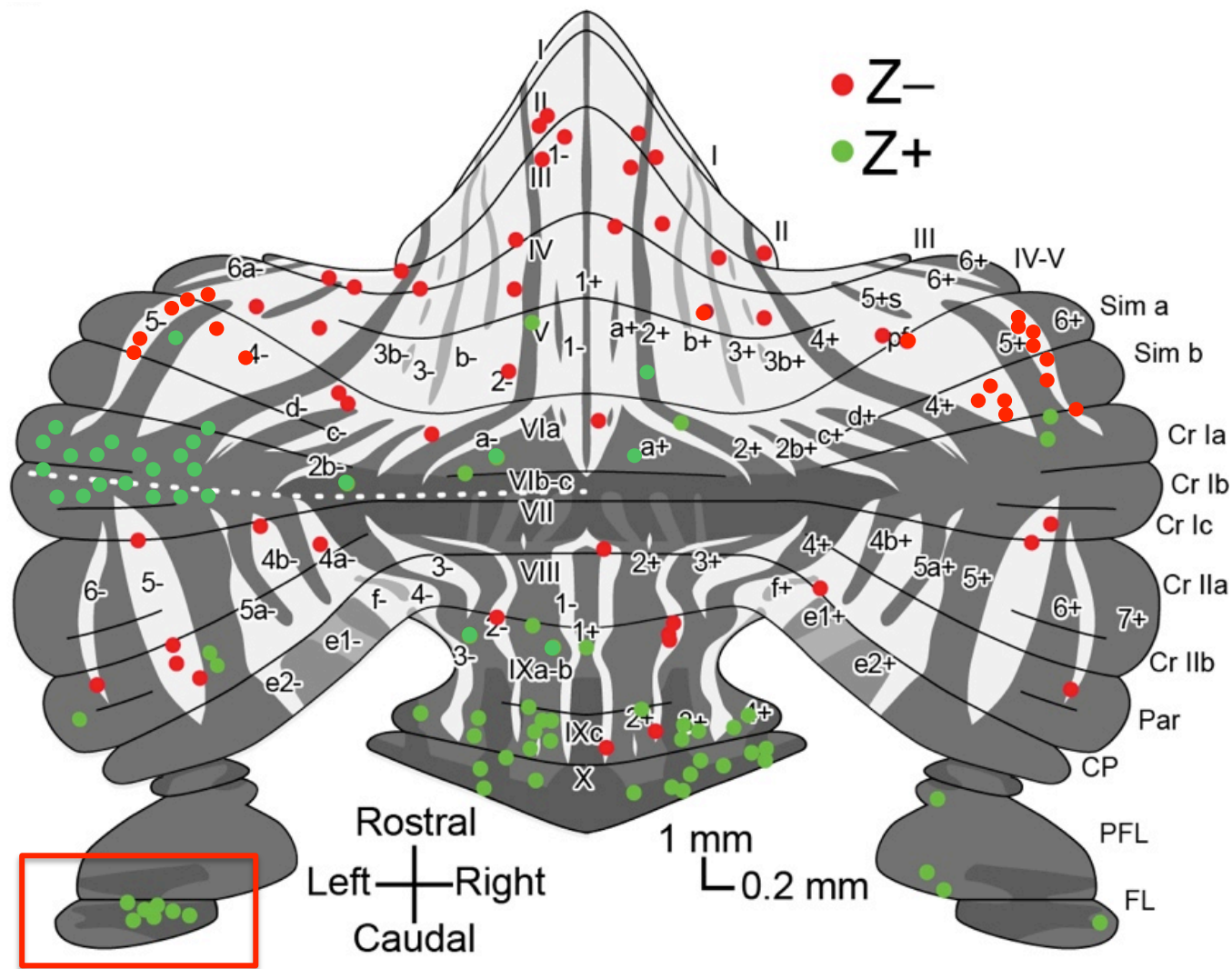


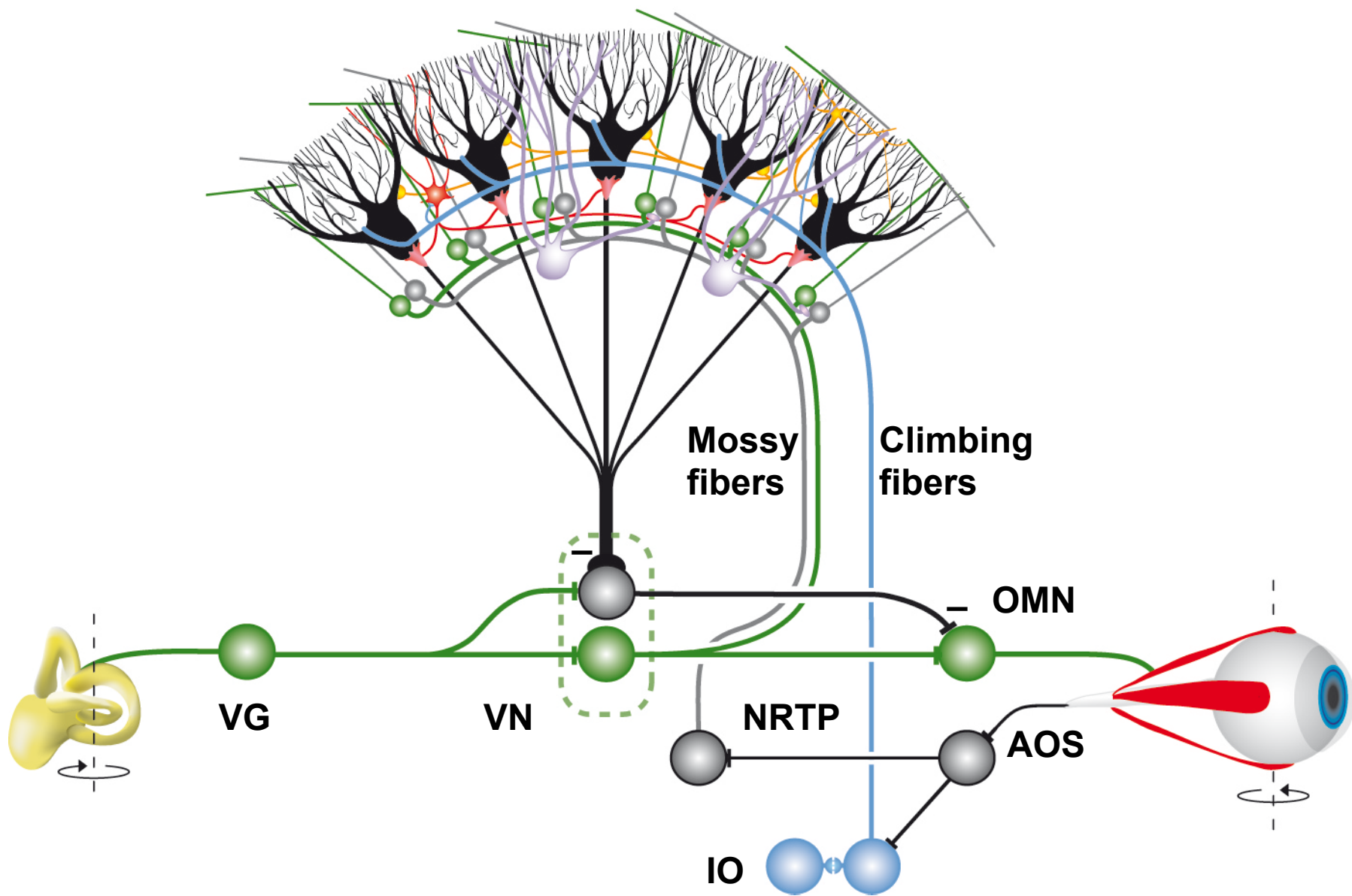
What is impact of different intrinsic firing frequencies on learning mechanisms?



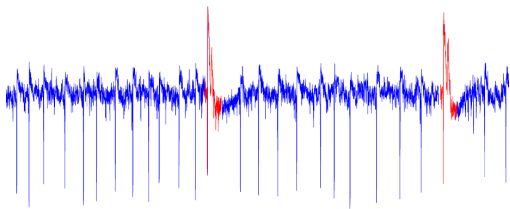
- **Differential encoding in olivocerebellar modules**
- **Learning in Zebrin-positive zones is dominated by increase in simple spike activity**
- **Learning in Zebrin-negative zones is dominated by decrease in simple spike activity**

Purkinje cell activity in Z+ zones during vestibular gain-increase learning

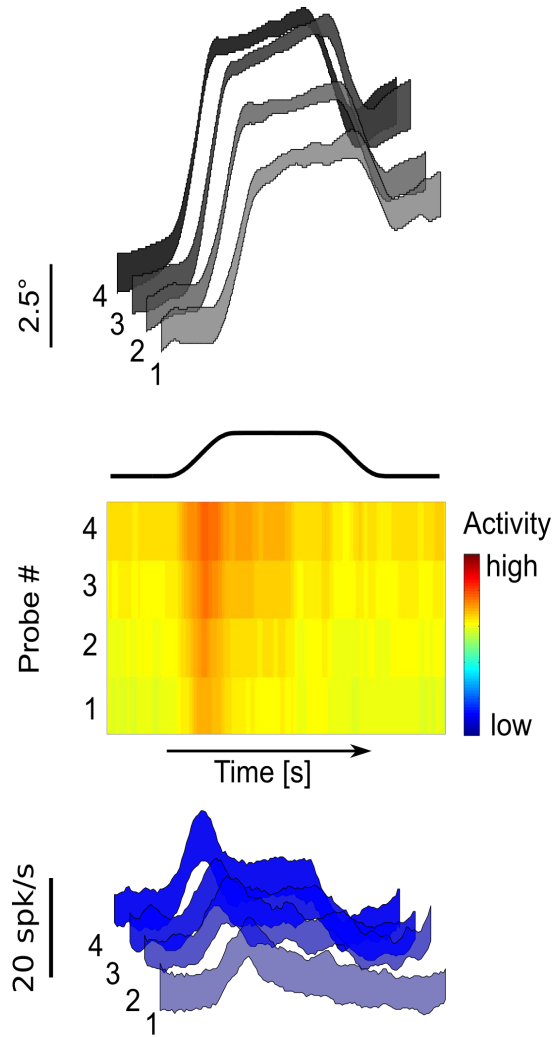




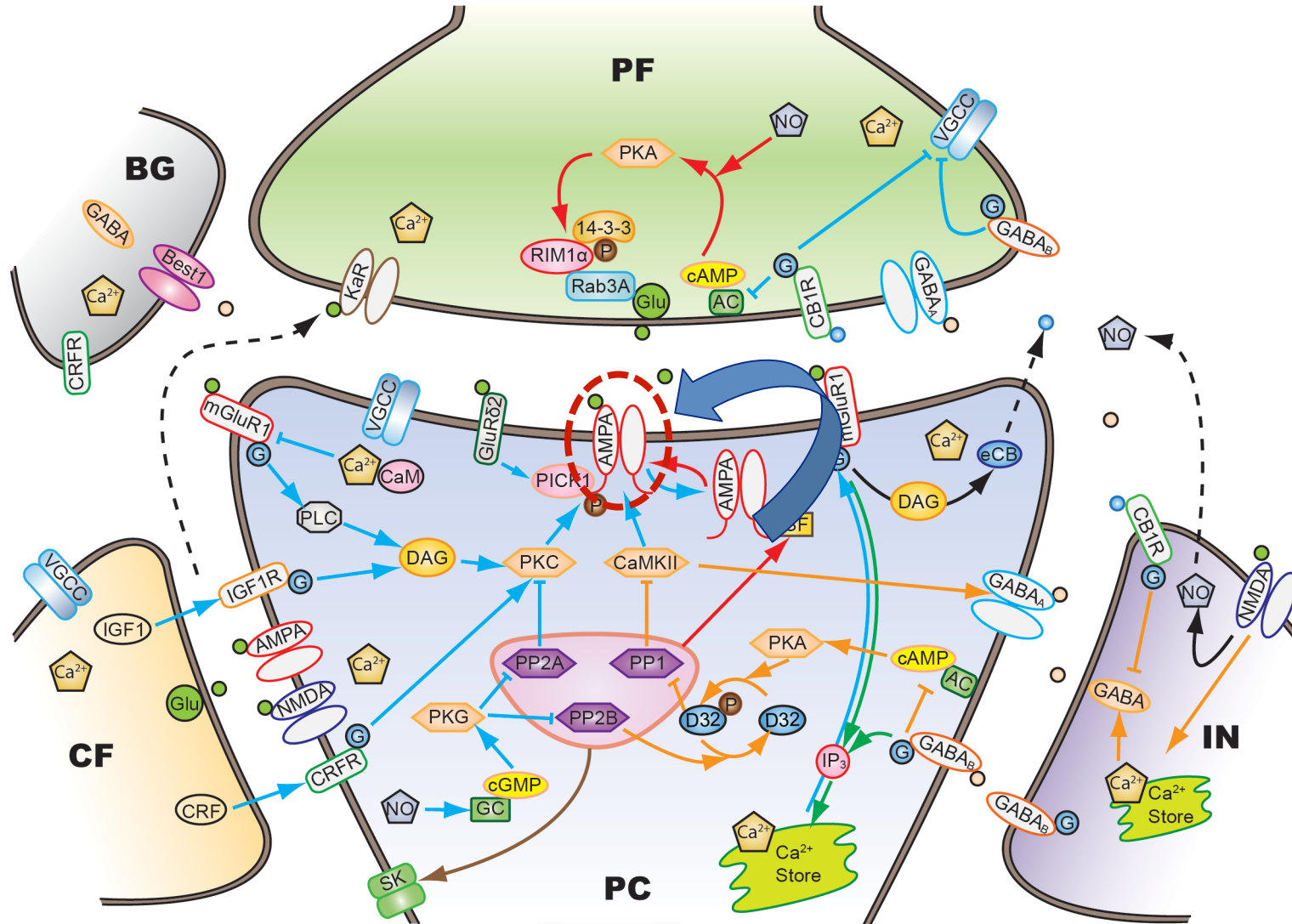
Purkinje cell activity

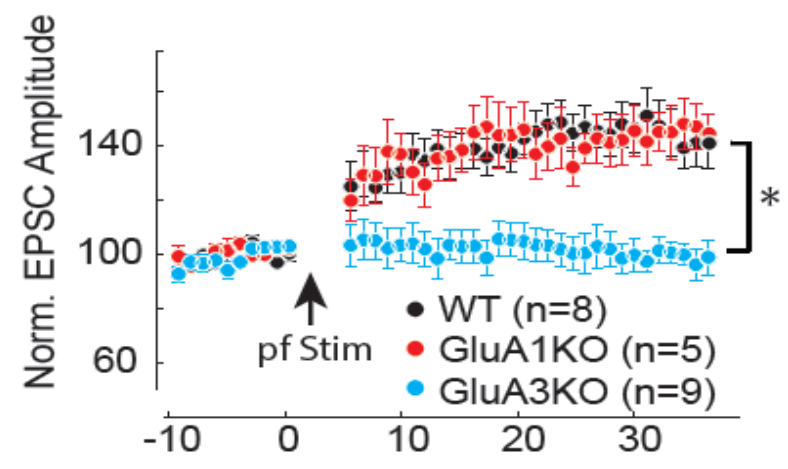
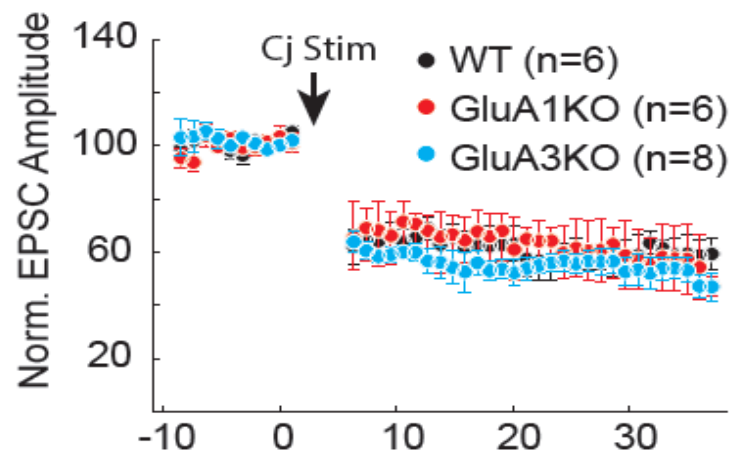
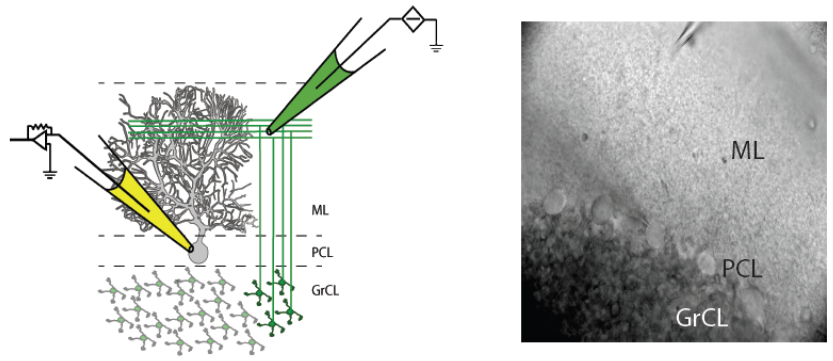


Increase



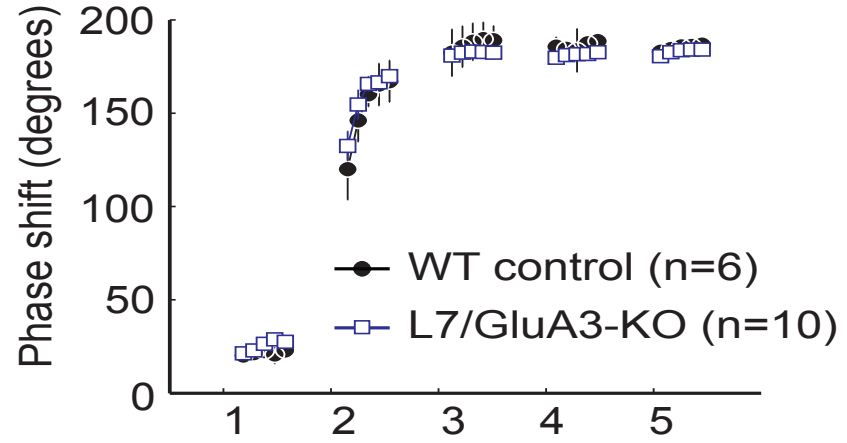
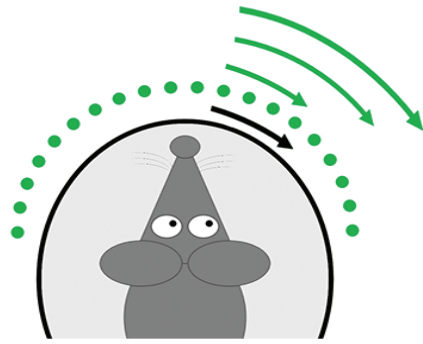
Role of GluR3 in postsynaptic LTP at PF-PC synapse



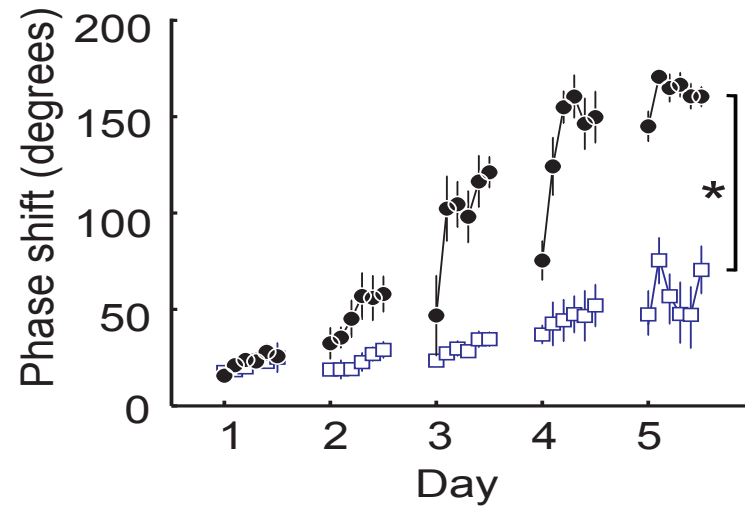
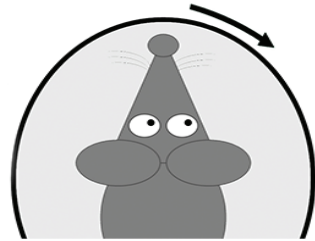


Gutierrez et al.,
2017 Neuron

A

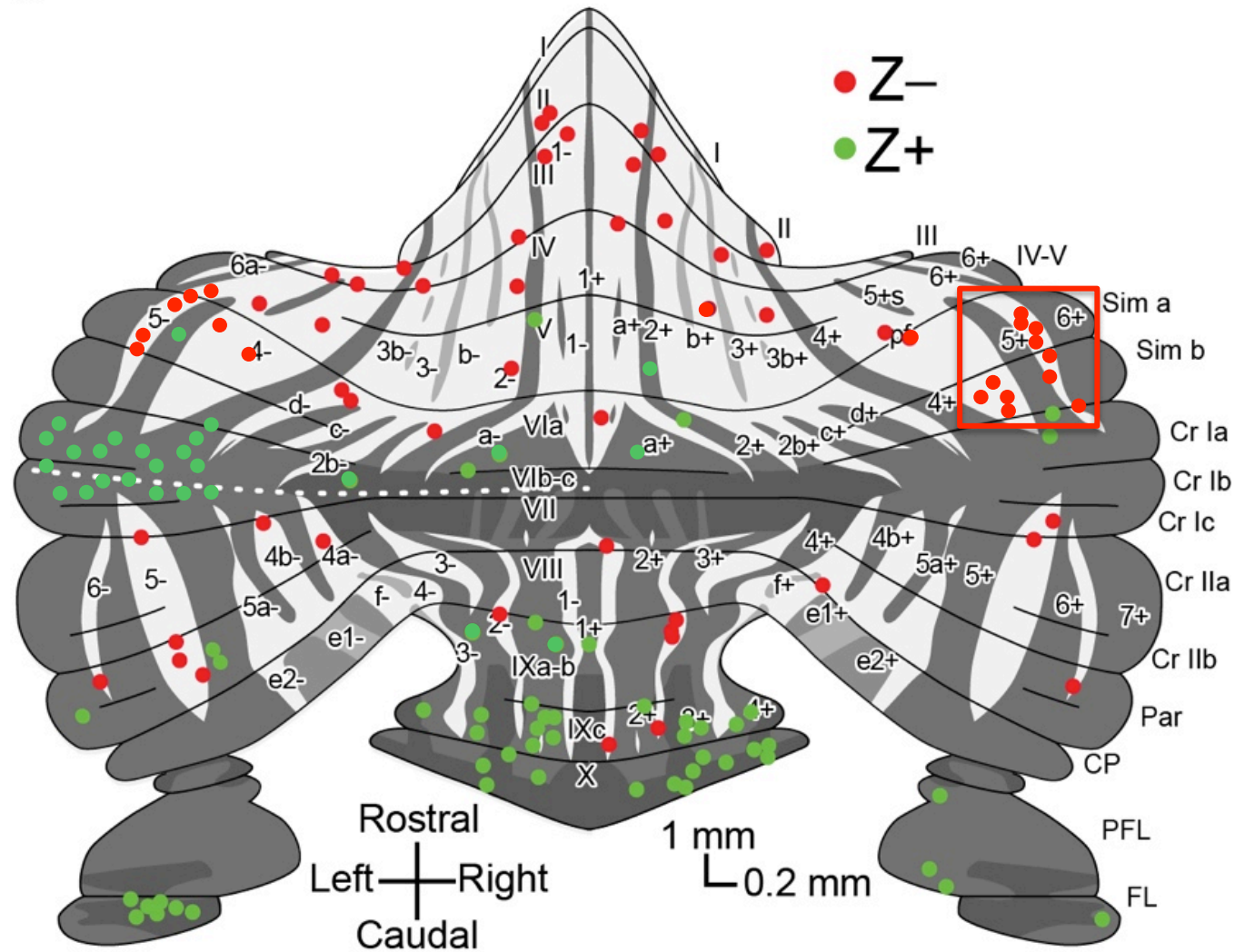


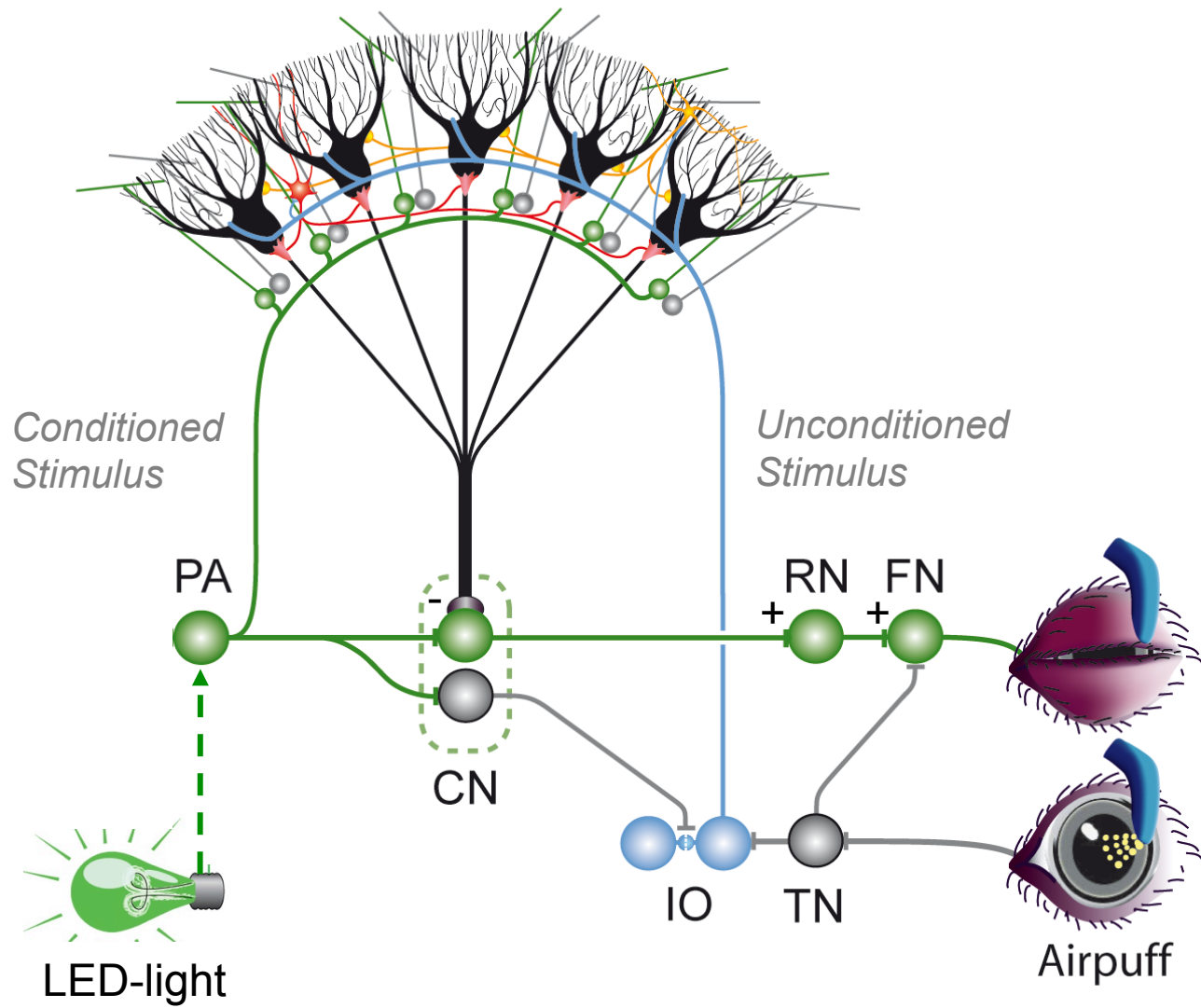
B



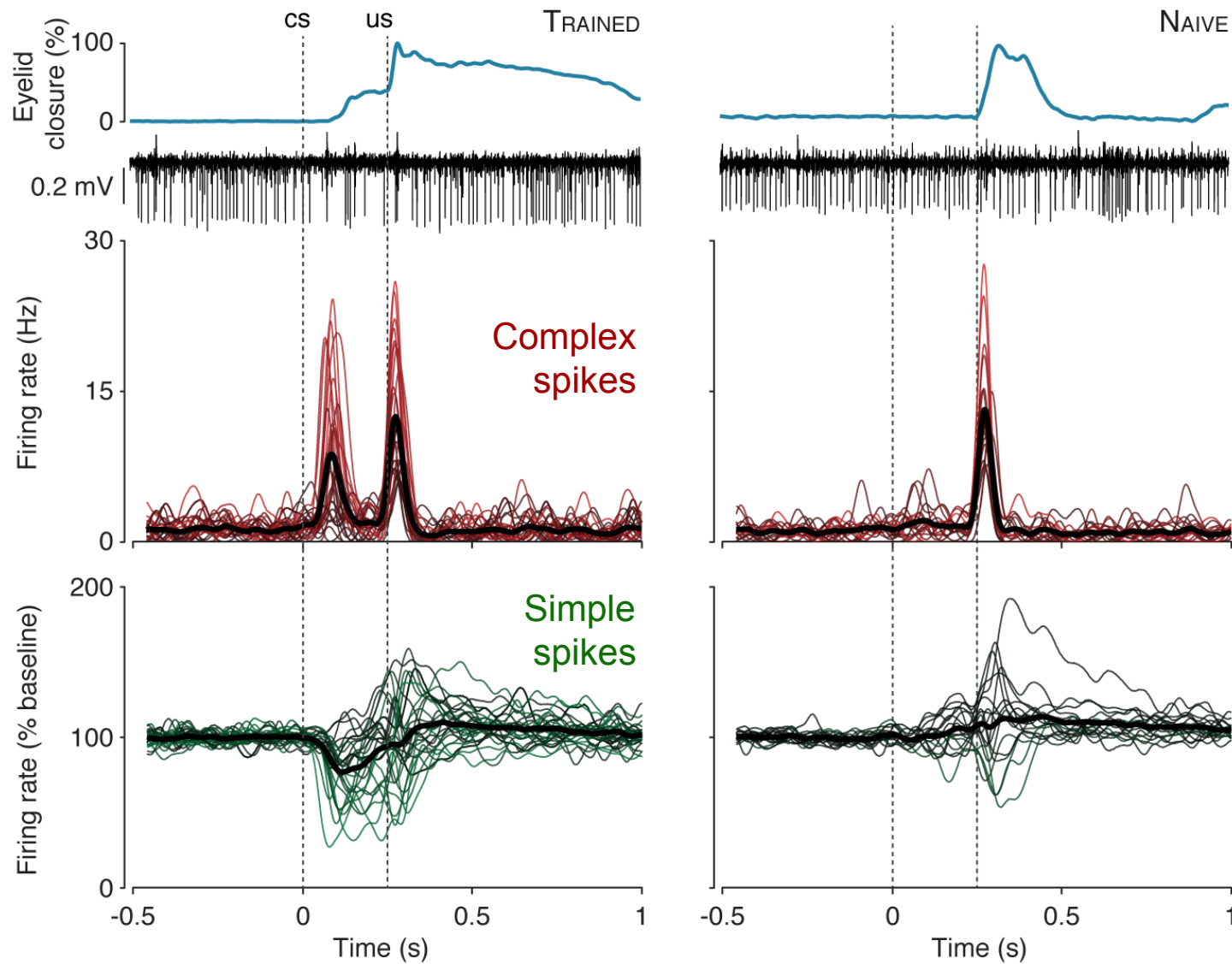
- **Differential encoding in olivocerebellar modules**
- **Learning in Zebrin-positive zones is dominated by increase in simple spike activity**
- **Learning in Zebrin-negative zones is dominated by decrease in simple spike activity**

Purkinje cell activity in Z- zones during eyeblink conditioning

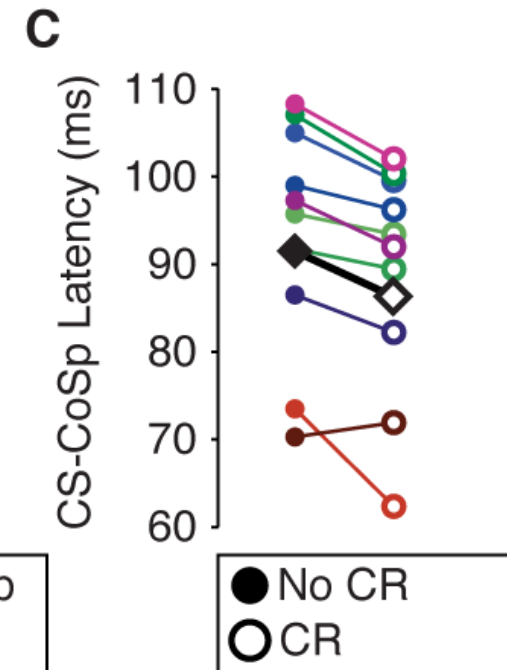
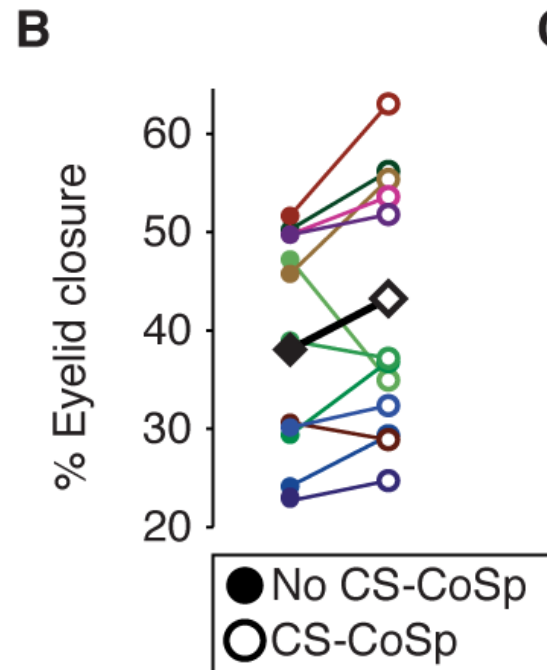
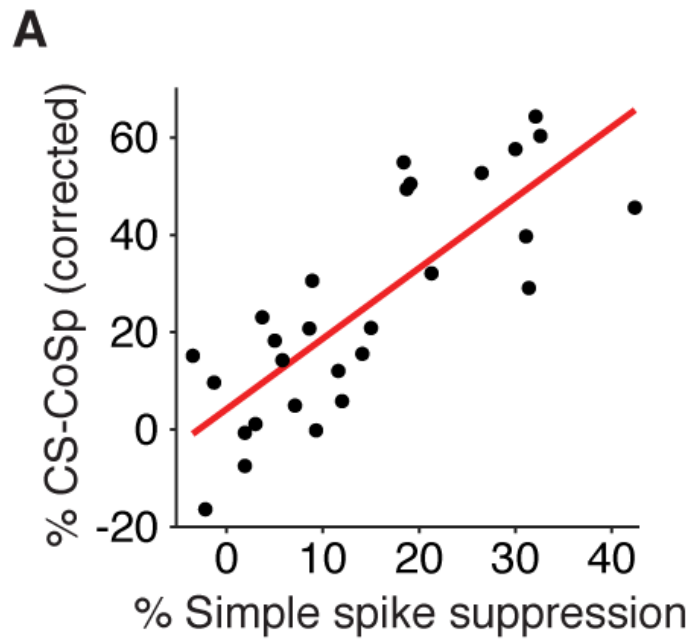




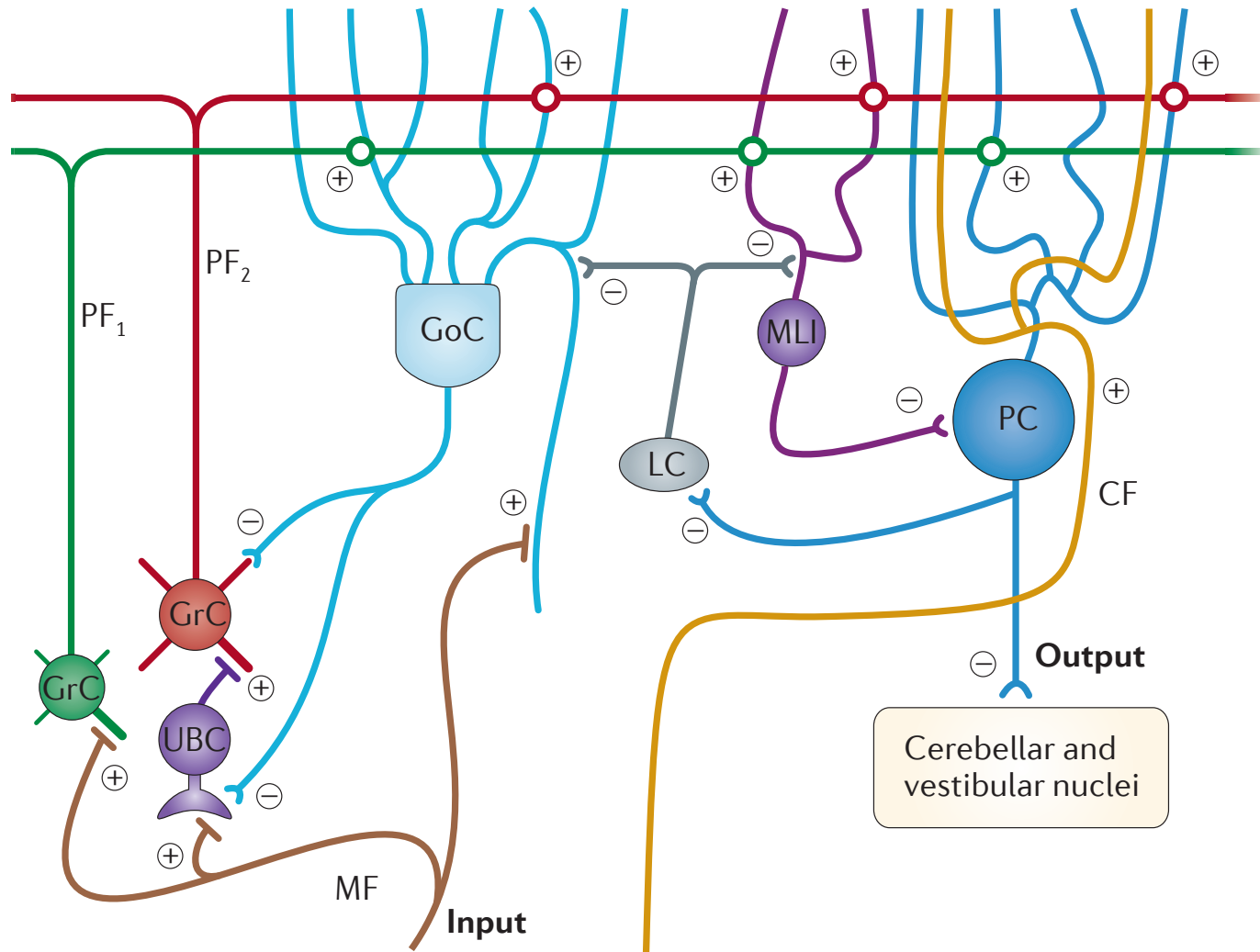
Instead complex spikes are increased at CR onset



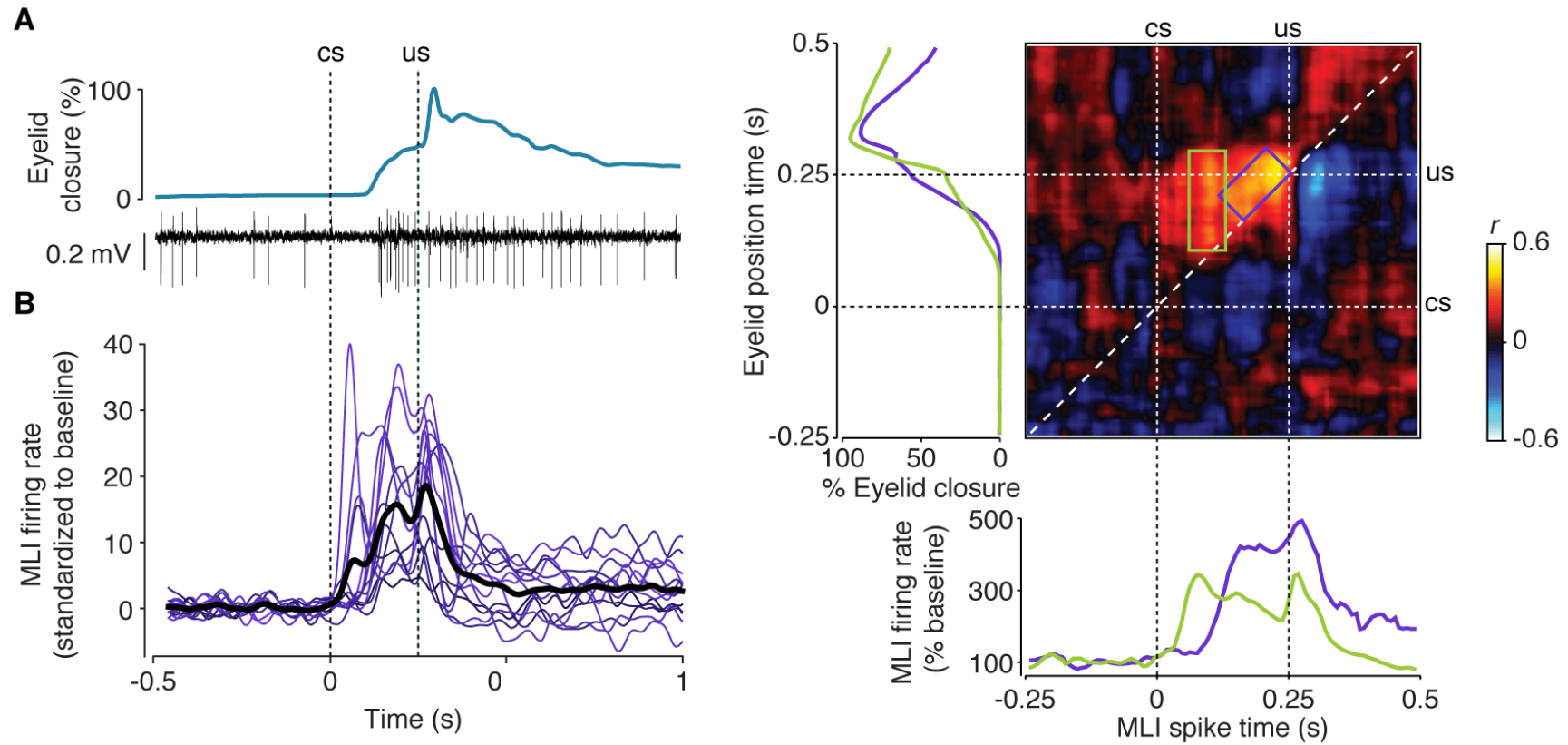
Trials with a complex spike show accelerated CRs



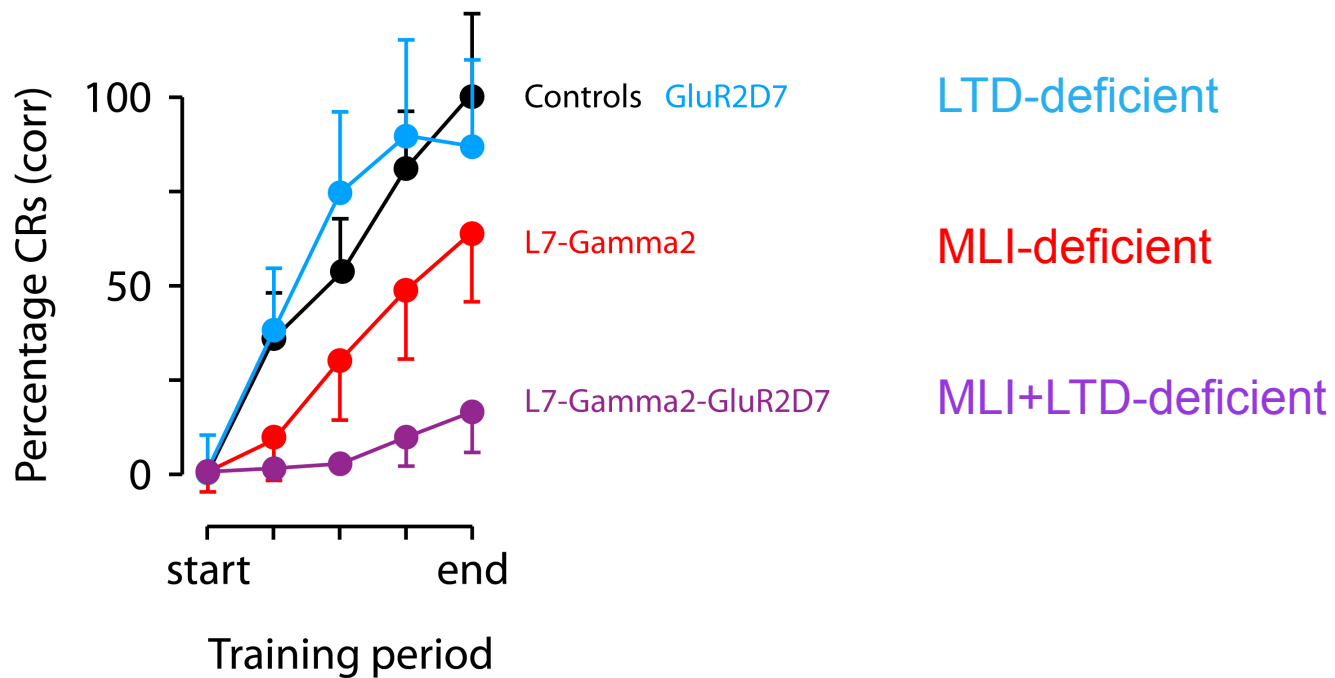
Which cellular mechanisms underlie the simple spike suppression?



Enhanced activity of MLIs correlates with eyeblink position on a trial-by-trial basis



but LTD does contribute



- **Differential encoding in olivocerebellar modules**
- **Learning in Zebrin-positive zones is dominated by increase in simple spike activity**
- **Learning in Zebrin-negative zones is dominated by decrease in simple spike activity**